

The GO 4

XTF

Extended Flat Deck



- Up to 1000lb payload
- Quick access to the curb
- Optional hinged doors
- 4x5 foot aluminum deck
- Efficient drive train fuel or electric
- Tool box, van body, and more

Introducing the GO-4 XTF

Built on the popular GO-4 platform for parking enforcement. This model offers an extended chassis allowing for the integration of a 5 foot aluminum deck with optional clamping walls. The GO-4 XTF can be ordered without doors for quick access to the curb, or with hinged doors for cold climates. Optional upgraded suspension allows for a total 1000lb payload capacity. Speed limit options between 30 - 40 mph.

1.204.594.4100
WESTWARDINDUSTRIES.COM





GO4 | XTF

The GO-4 XTF allows operators to deploy a platform with increased versatility over the standard GO-4 for parking enforcement. The XTF can be tasked for parking enforcement, public works, water treatment, street line painting, vector control and more. At 55 inches wide the XTF is very compact, offers a tight turning radius, and comes standard with 600lb payload. Option up to our 1000 lb payload which comes with an upgraded rear suspension.

The GO-4 XTF can be outfitted with many helpful accessories such as an industrial grade metal tool box, a metal van body for last mile delivery or courier applications. Food concessions is also a possibility as the XTF can easily navigate congested food markets. Heating and air conditioning can also be installed.

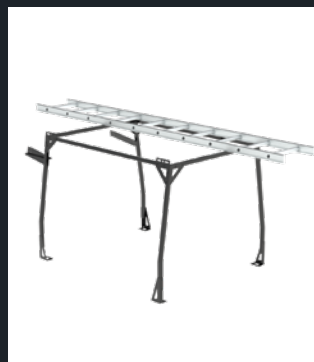
The drivetrain can either be outfitted with a highly efficient 1.0L ICE engine with automatic transmission or alternatively go sustainable with Westward's electric utility vehicle platform offering 48 volt our 72 volt long range Lithium-Ion battery packs. Our battery packs come in various ranges from 35 to 100 miles. Can charge on Level 1 or Level 2 charging with a J1772 charging cable.

Key Benefits:

- Compact, only 55" wide with an 11' turning radius
- Efficient drive train fuel or electric
- Quick access to the curb with optional hinged doors
- 4x5' aluminum deck with optional clamping walls
- Upgrade to a 1000lb payload
- Optional accessories such as; a tool box, van body, LPR camera system, ladder rack, and more



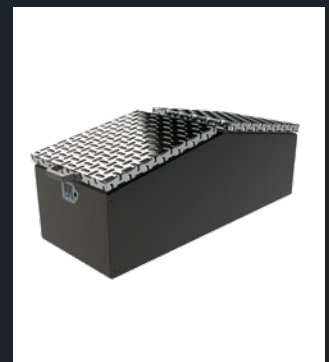
Comfort interior



Ladder rack



Van body



Tool box